

Guðmundur Stefánsson, MATÍS




NPA presentation, Borgarnesi, 15. nóvember 2016

URCHIN – Utilisation of the Arctic Sea Urchin Resource

“Enabling SME’s, Government agencies and local government to develop urchins fisheries in remote areas of the NPA through Increased innovation and transfer of new technology in remote sparsely populated areas.”



Regions belonging, entirely or partially, to the Northern Periphery and Arctic Programme area

-  National Boundary
-  in EU Member States
-  Outside the EU

SVALBARD



GREENLAND



Northern Periphery and Arctic Programme Area 2014 – 2020



NR101246

©Nordregio & NLS Finland for administrative boundaries



Northern Periphery and Arctic Programme

2014–2020



EUROPEAN UNION

Investing in your future
European Regional Development Fund

FAROE ISLANDS

NORTHERN IRELAND

SCOTLAND

IRELAND

NORWAY

SWEDEN

FINLAND



HAFRANNSÓKNASTOFNUN

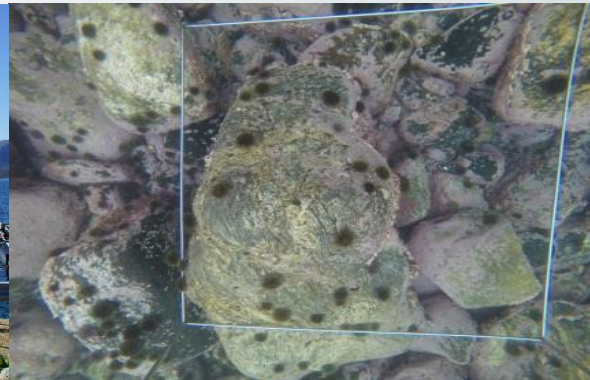
Rannsókn- og ráðgjafarstofnun hafs og vatna
MARINE & FRESHWATER RESEARCH INSTITUTE



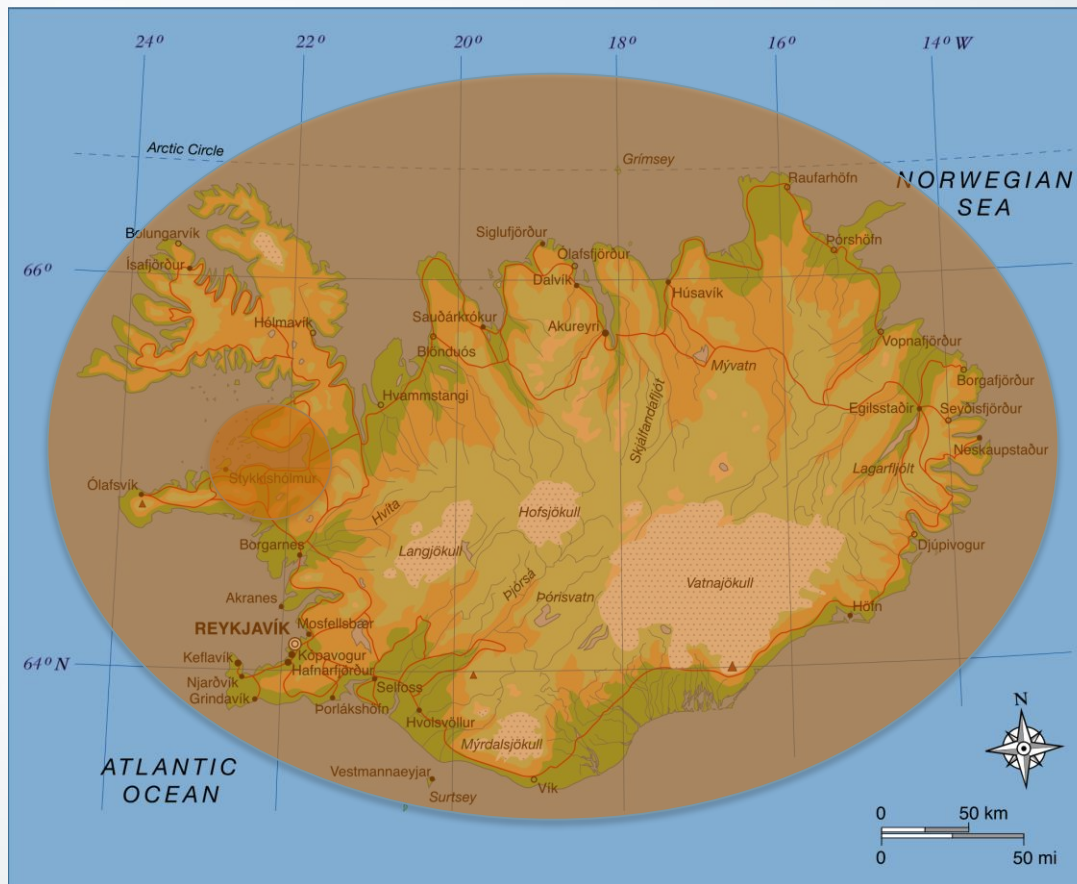
Objectives (WP1): Optimise fishing techniques



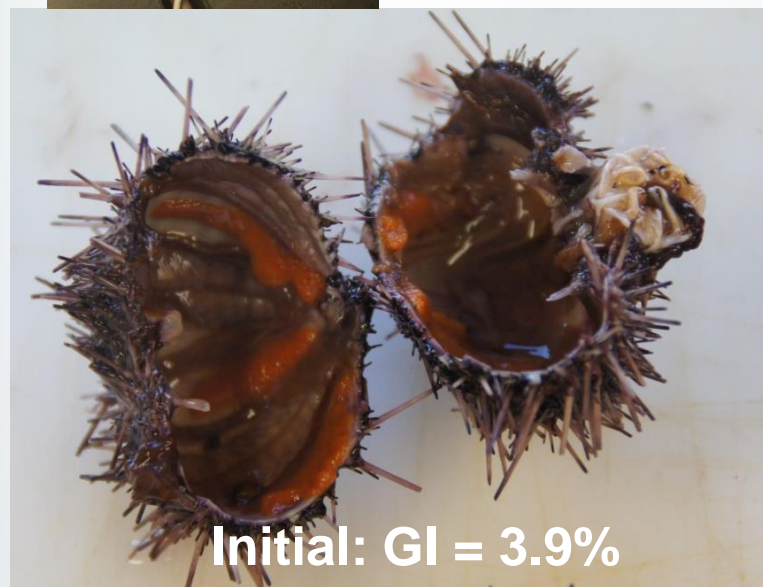
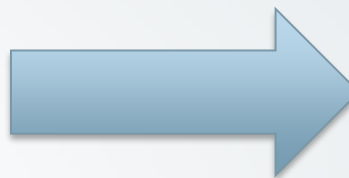
Objectives (WP2): Stock biomass assessment



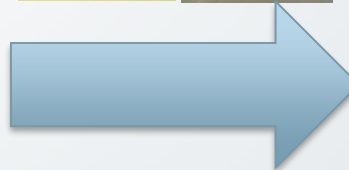
Objectives (WP3): Implementation of fisheries management & legislation



Objectives (WP4): Roe enhancement & reseedling

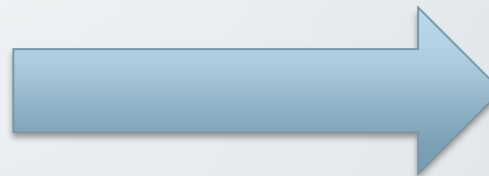
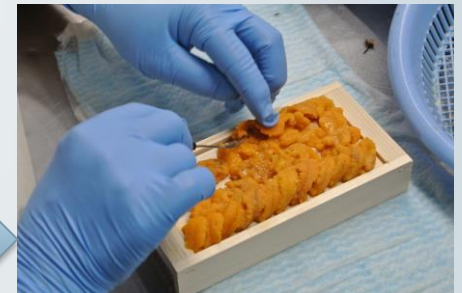
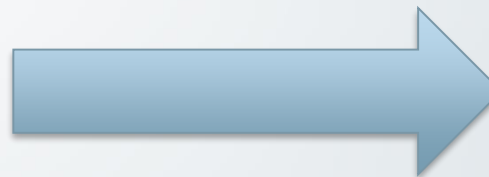


Initial: GI = 3.9%



10 weeks: GI = 20.2%

Objectives (WP5): Storage & transportation to markets



Northern Periphery and
Arctic Programme
2014–2020



EUROPEAN UNION
Investing in your future
European Regional Development Fund



URCHIN
Utilising the Arctic Urchin Resource

Objectives (WP 6):

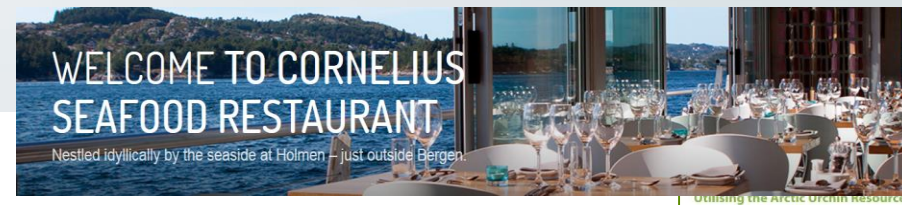
Market assessment & development

Asian markets



European markets

- Boulogne sur Mer; Europe's largest fish-processing centre, (330,000 tonnes of fish last year)
- Restaurants

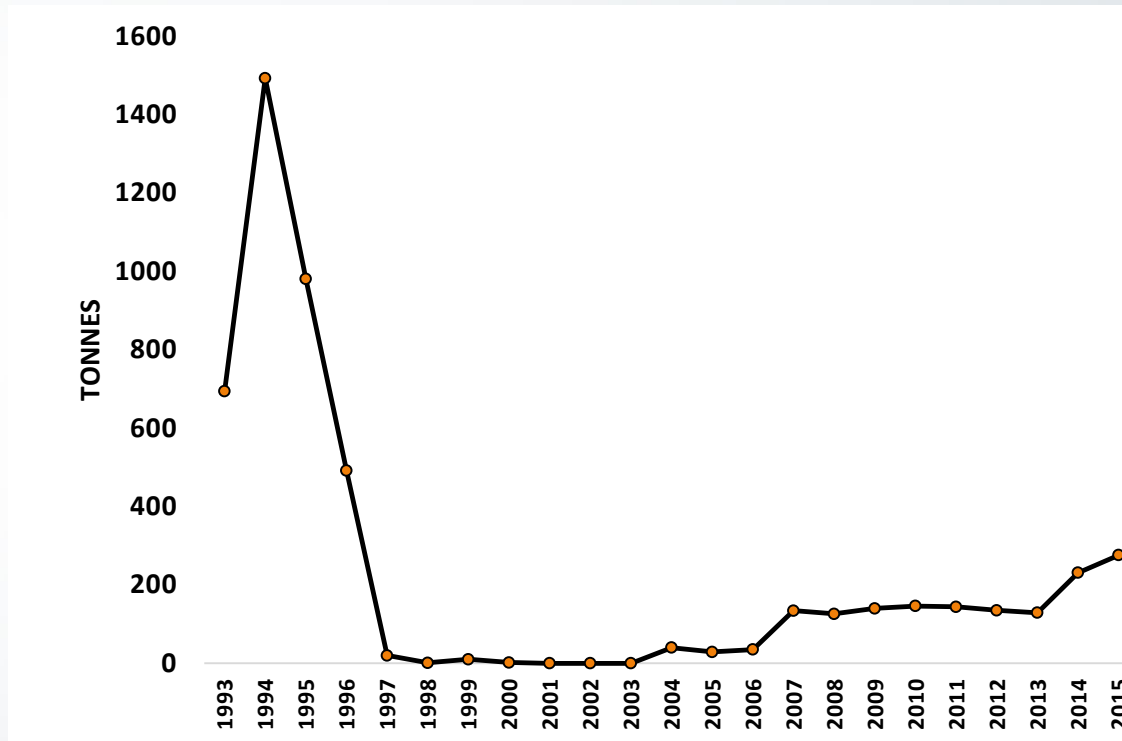


Iceland – utilisation

- Only the gonads (roe) are utilised
- Market demands good quality of fresh roe
 - Right color (yellow, orange)
 - Gonad yield > 10%
- Fishing season from September-April
(gonads full of food reserve)
- Frozen and preserved roe

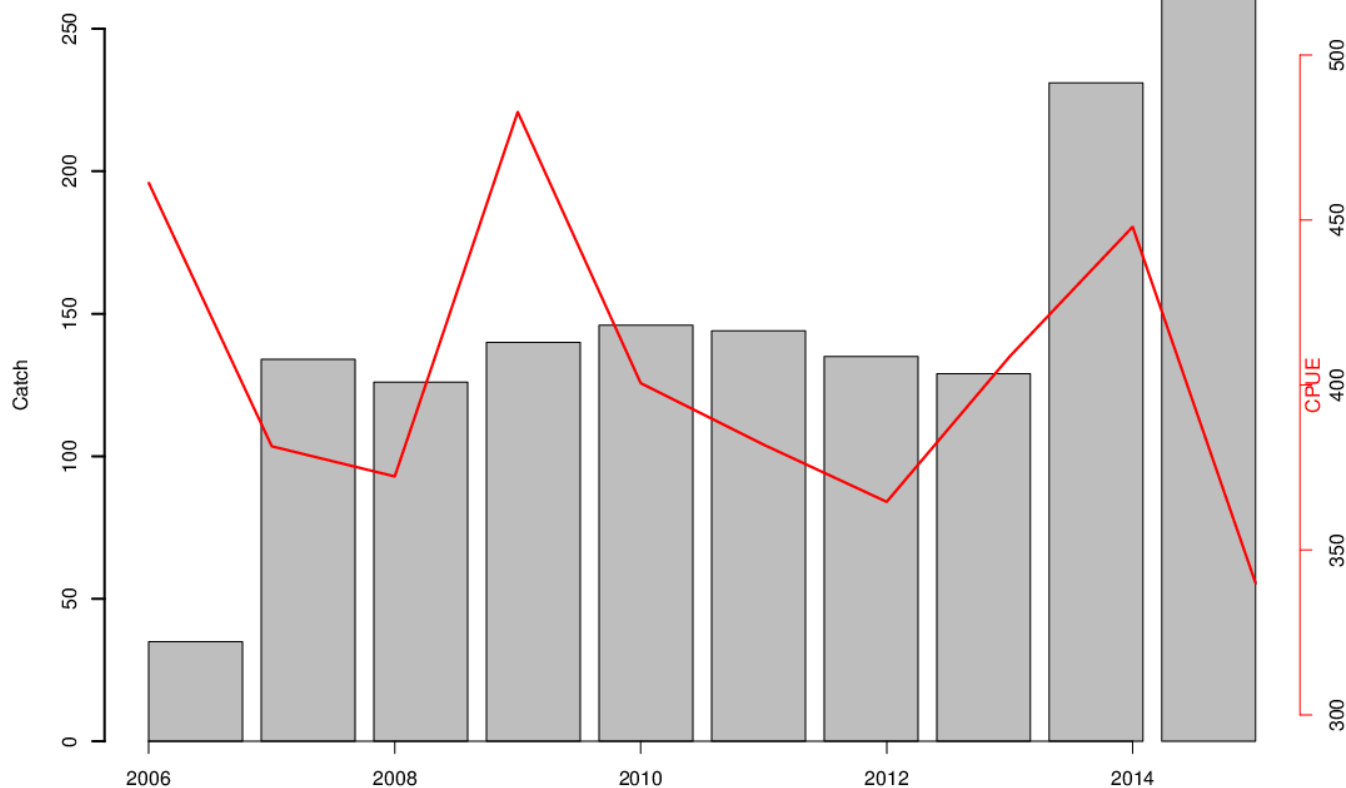


The Icelandic fishery



Landings and CPUE 2006-2015

Iceland



Export of live sea-urchin from Iceland

YEAR	Amount (kg)	Value (€)	€/kg
2001	0		
2006	495	1.922	3,9
2010	106.109	670.661	6,3
2011	112.535	702.068	6,2
2012	106.716	711.544	6,7
2013	106.716	704.338	6,6
2014	117.330	743.002	6,3

Research Institutes

Urchin Resource



Utilisation



Fishers, farmers, live holding, transport, export, processing

Small and medium business

Government Institutes & Agencies

URCHIN Project

Higher Education Institutes

Regional Agencies

Business Support Organisations



Takk fyrir!

